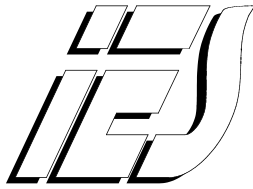


# Project Description

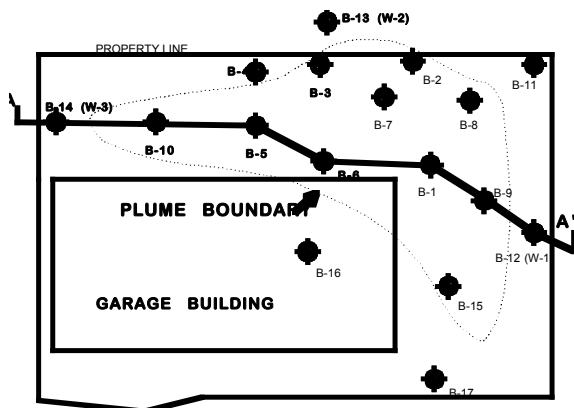


**Description:** *LUST Site Remediation*

**Site:** *Automotive Repair Facility*

**Location:** *Indiana*

The owner of a local automotive repair facility removed his USTs from the ground. During removal, a substantial release of gasoline was identified. Following a detailed subsurface investigation, a plume of TPH impacted soil was identified as illustrated below:



Integrated Environmental Solutions, Inc. (IES) was retained by the owner to develop an effective corrective action plan and to aggressively pursue cost-reimbursement through Indiana's Excess Liability Trust Fund (ELTF). The thickness of the impacted soil layer was only approximately 4 to 5 feet, but impacted soils were located beneath approximately 8 feet of clean overburden. For this reason, corrective action required the removal and replacement of more than twice the volume of contaminated soil. The corrective action plan specified detailed procedures for discerning impacted/non-impacted soil, including frequent sampling and analysis.

IES was subsequently retained as the general contractor for the cleanup. Over an approximately 24 day period, IES excavated approximately 2,200 cubic yards of soil,

exporting approximately 820 cubic yards to a special-waste permitted landfill.

From the inception of the project, the stability of the facility structure was an issue. The state regulatory agency indicated that they believed sheeting and shoring would be necessary. By correctly staging the excavation in the vicinity of the building, IES was able to complete the work without sheeting or shoring, saving the customer considerable money. At the conclusion of corrective action, the site was restored and IES was successful in recovering 99 percent



of the total cost from the ELTF.

***“WE CLEAN YOUR WORLD”***